

STONETRACE

STONE COLLECTION



STONETRACE

Stonetrace si ispira alla pietra Cardoso, della quale esalta i movimenti determinati della sedimentazione e le caratteristiche sfumature cromatiche.

La superficie così assume un andamento fluido, armonioso, ricco di sfumature e allo stesso tempo sobrio e gradevole.

Arricchisce la serie il decoro Rail che propone tagli longitudinali sulla superficie conferendole volume e tridimensionalità.

Stonetrace is inspired by Cardoso stone, emphasising its distinctive patterning formed by the sedimentation process, and characteristic shade variations.

The surface thus created is constantly changing, tasteful, rich in shade modulations yet elegant and attractive.

The series also features the Rail decor, with longitudinal cuts that create a three-dimensional surface with genuine volume.

Inspirée de la pierre « Pietra di Cardoso », la collection Stonetrace exalte les mouvements provoqués par la sédimentation, ainsi que les caractéristiques dégradés couleurs. La surface affiche une esthétique fluide, harmonieuse, très nuancée, tout en restant sobre et agréable.

La collection comporte le décor Rail qui ajoute des découpes longitudinales pour apporter volume et tridimensionnalité.

Stonetrace se inspira en la piedra Cardoso, de la que pone de relieve los trazos debidos a la sedimentación y sus característicos tonos cromáticos.

La superficie, de este modo, adquiere un aspecto fluido, armonioso, rico en tonalidades y al mismo tiempo sobrio y agradable.

Enriquece la serie la decoración Rail, cuya superficie se ve surcada por cortes longitudinales que le confieren volumen y tridimensionalidad.



dark grey

Dark Grey Nat. Rett. 60x60 - 23^{5/8}" x 23^{5/8}"



ivory

Ivory 60x60 - 23^{5/8}" x 23^{5/8}"
Rail Ivory 30x60 - 11^{13/16}" x 23^{5/8}"

taupe

Taupe Nat. Rett. 60x60 - 23^{5/8}" x 23^{5/8}" Taupe Nat. Rett. 30x60 - 11^{13/16}" x 23^{5/8}"





grey

Grey Nat. Rett. 30x60 - 11^{13/16}" x 23^{5/8}"



60x60



60x60 - 23^{5/8}" x 23^{5/8}"
ECK7 60DG1R Ivory Nat. Rett.



60x60 - 23^{5/8}" x 23^{5/8}"
ECK8 60DG3R Taupe Nat. Rett.



60x60 - 23^{5/8}" x 23^{5/8}"
ECK9 60DG5R Denim Nat. Rett.



60x60 - 23^{5/8}" x 23^{5/8}"
ECKA 60DG8R Grey Nat. Rett.



60x60 - 23^{5/8}" x 23^{5/8}"
ECKC 60DG9R Dark Grey Nat. Rett.

30x60



30x60 - 11^{13/16}" x 23^{5/8}"
ECKD 63DG1R Ivory Nat. Rett.



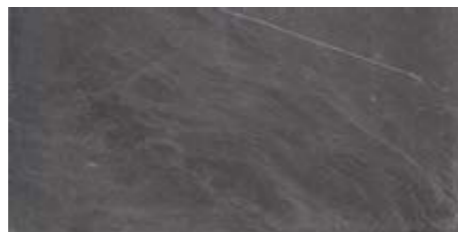
30x60 - 11^{13/16}" x 23^{5/8}"
ECKF 63DG3R Taupe Nat. Rett.



30x60 - 11^{13/16}" x 23^{5/8}"
ECKH 63DG5R Denim Nat. Rett.



30x60 - 11^{13/16}" x 23^{5/8}"
ECKK 63DG8R Grey Nat. Rett.

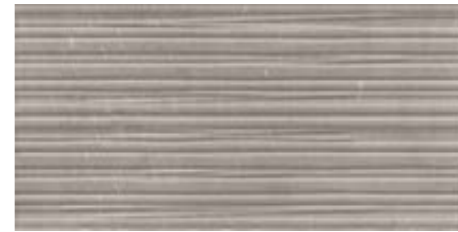


30x60 - 11^{13/16}" x 23^{5/8}"
ECKM 63DG9R Dark Grey Nat. Rett.

Decoro Rail 3D



30x60 - 11^{13/16}" x 23^{5/8}"
ECKE 63DG1RB Ivory Nat. Rett.



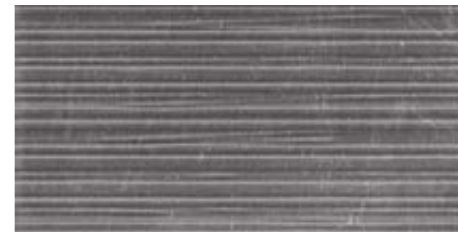
30x60 - 11^{13/16}" x 23^{5/8}"
ECKG 63DG3RB Taupe Nat. Rett.



30x60 - 11^{13/16}" x 23^{5/8}"
ECKJ 63DG5RB Denim Nat. Rett.



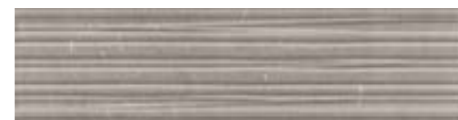
30x60 - 11^{13/16}" x 23^{5/8}"
ECKL 63DG8RB Grey Nat. Rett.



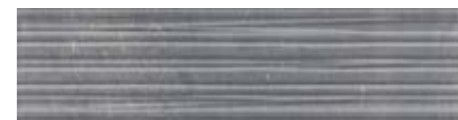
30x60 - 11^{13/16}" x 23^{5/8}"
ECKN 63DG9RB Dark Grey Nat. Rett.



15x60 - 5^{7/8}" x 23^{5/8}"
ECR2 97DG1RB Ivory Nat. Rett.



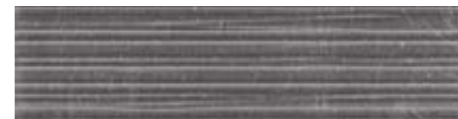
15x60 - 5^{7/8}" x 23^{5/8}"
ECR3 97DG3RB Taupe Nat. Rett.



15x60 - 5^{7/8}" x 23^{5/8}"
ECR4 97DG5RB Denim Nat. Rett.



15x60 - 5^{7/8}" x 23^{5/8}"
ECR5 97DG8RB Grey Nat. Rett.



15x60 - 5^{7/8}" x 23^{5/8}"
ECR6 97DG9RB Dark Grey Nat. Rett.

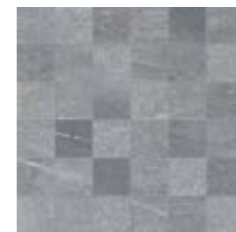
Mosaico* Tessera - Chip 4,8x4,8 - 1^{7/8}x1^{7/8}



30x30 - 11^{13/16}" x 11^{13/16}"
ECNJ I30DG1R Ivory Nat.



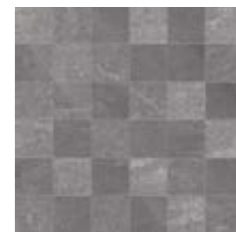
30x30 - 11^{13/16}" x 11^{13/16}"
ECNK I30DG3R Taupe Nat.



30x30 - 11^{13/16}" x 11^{13/16}"
ECNL I30DG5R Denim Nat.



30x30 - 11^{13/16}" x 11^{13/16}"
ECNM I30DG8R Grey Nat.



30x30 - 11^{13/16}" x 11^{13/16}"
ECNN I30DG9R Dark Grey Nat.

Mosaico Domino* Tessera - Chip 2,3x4,8 - 7/8x1^{7/8}



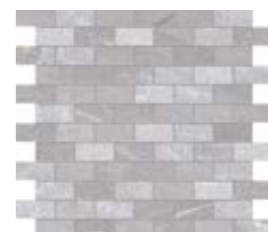
30x30 - 11^{13/16}" x 11^{13/16}"
ECR L M30DG1R Ivory Nat.



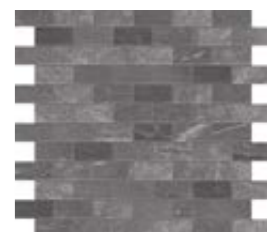
30x30 - 11^{13/16}" x 11^{13/16}"
ECR M M30DG3R Taupe Nat.



30x30 - 11^{13/16}" x 11^{13/16}"
ECR N M30DG5R Denim Nat.



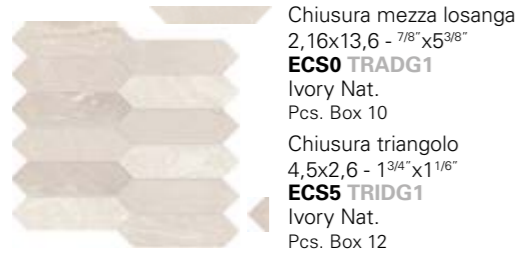
30x30 - 11^{13/16}" x 11^{13/16}"
ECR P M30DG8R Grey Nat.



30x30 - 11^{13/16}" x 11^{13/16}"
ECR Q M30DG9R Dark Grey Nat.

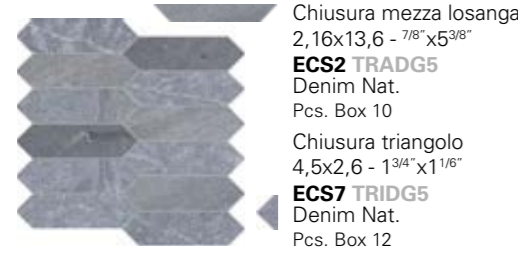
* Su rete in fibra - On fibre mesh backing - Sur filet en fibre de verre - Sobre malla de fibra

Mosaico Arrows*



Chiusura mezza losanga
2,16x13,6 - 7/8" x 5 3/8"
ECS0 TRADG1
Ivory Nat.
Pcs. Box 10
Chiusura triangolo
4,5x2,6 - 1 3/4" x 1 1/8"
ECS5 TRIDG1
Ivory Nat.
Pcs. Box 12

28,5x29,3 - 11 1/4" x 11 9/16"
ECRV R30DG1 Ivory Nat.



Chiusura mezza losanga
2,16x13,6 - 7/8" x 5 3/8"
ECS2 TRADG5
Denim Nat.
Pcs. Box 10
Chiusura triangolo
4,5x2,6 - 1 3/4" x 1 1/8"
ECS7 TRIDG5
Denim Nat.
Pcs. Box 12

28,5x29,3 - 11 1/4" x 11 9/16"
ECRX R30DG5 Denim Nat.

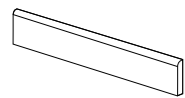


Chiusura mezza losanga
2,16x13,6 - 7/8" x 5 3/8"
ECS4 TRADG9
Dark Grey Nat.
Pcs. Box 10
Chiusura triangolo
4,5x2,6 - 1 3/4" x 1 1/8"
ECS9 TRIDG9
Dark Grey Nat.
Pcs. Box 12

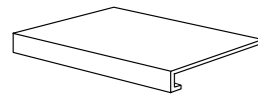
28,5x29,3 - 11 1/4" x 11 9/16"
ECRZ R30DG9 Dark Grey Nat.

* Su rete in fibra - On fibre mesh backing - Sur filet en fibre de verre - Sobre malla de fibra

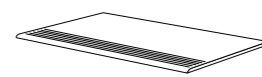
Pezzi speciali TRIMS PIECES SPECIALES PIEZAS ESPECIALES



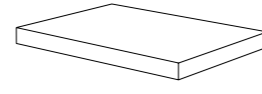
BATTISCOPA - SKIRTING
7,5x60 - 2 15/16" x 23 5/8"
Pcs. Box 15 - ML x Box 9
ECPG 87DG1R Ivory Nat. Rett.
ECPH 87DG3R Taupe Nat. Rett.
ECPJ 87DG5R Denim Nat. Rett.
ECPK 87DG8R Grey Nat. Rett.
ECP L 87DG9R Dark Grey Nat. Rett.



GRADONE - STEP
33x60x3,2x3,2 - 12 15/16" x 23 5/8" x 1 1/4" x 1 1/4"
Pcs. Box 4 - ML x Box 2,40
ECNP 1CDG1R Ivory Nat. Rett.
ECNQ 1CDG3R Taupe Nat. Rett.
ECNR 1CDG5R Denim Nat. Rett.
ECNS 1CDG8R Grey Nat. Rett.
ECNT 1CDG9R Dark Grey Nat. Rett.



GRADINO - STAIR TREAD
33x60 - 12 15/16" x 23 5/8"
Pcs. Box 6 - ML x Box 3,60
ECP5 71DG1R Ivory Nat. Rett.
ECP6 71DG3R Taupe Nat. Rett.
ECP7 71DG5R Denim Nat. Rett.
ECP8 71DG8R Grey Nat. Rett.
ECP9 71DG9R Dark Grey Nat. Rett.

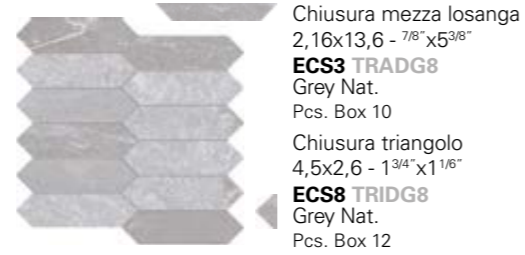


ANGOLARE DX / SX - CORNER TILE DX / SX
33x60x3,2x3,2 - 12 15/16" x 23 5/8" x 1 1/4" x 1 1/4"
Pcs. Box 2 - ML x Box 1,20
ECNV 4ADG1RD / ECNW 4ADG1RS Ivory Nat. Rett.
ECNX 4ADG3RD / ECNY 4ADG3RS Taupe Nat. Rett.
ECNZ 4ADG5RD / ECP0 4ADG5RS Denim Nat. Rett.
ECP1 4ADG8RD / ECP2 4ADG8RS Grey Nat. Rett.
ECP3 4ADG9RD / ECP4 4ADG9RS Dark Grey Nat. Rett.



Chiusura mezza losanga
2,16x13,6 - 7/8" x 5 3/8"
ECS1 TRADG3
Taupe Nat.
Pcs. Box 10
Chiusura triangolo
4,5x2,6 - 1 3/4" x 1 1/8"
ECS6 TRIDG3
Taupe Nat.
Pcs. Box 12

28,5x29,3 - 11 1/4" x 11 9/16"
ECRW R30DG3 Taupe Nat.



Chiusura mezza losanga
2,16x13,6 - 7/8" x 5 3/8"
ECS3 TRADG8
Grey Nat.
Pcs. Box 10
Chiusura triangolo
4,5x2,6 - 1 3/4" x 1 1/8"
ECS8 TRIDG8
Grey Nat.
Pcs. Box 12

28,5x29,3 - 11 1/4" x 11 9/16"
ECRY R30DG8 Grey Nat.

STONETRACE

Dry - Pressed Ceramic Tiles ISO 13006 Annex G - UNI EN 14411 Annex G - Bla GL



CARATTERISTICHE TECNICHE		NORMA	VALORI
Technical Features - Caracteristiques Techniques - Technische Eigenschaften Technische Eigenschaften - Caracteristicas Tecnicas - Технические Характеристики		Standard - Norme Norm - Norma - Norma	Value - Valeur Vorgabe - Valor - Средние
	PLANARITÀ Flatness - Planéité - Ebenflächigkeit - Planaridad - Плоскостность	UNI EN ISO 10545/2	± 0,26% / ± 1,5 mm
		ASTM C485 CALIBRATED ± 0,75% (MAX ± 0,09 in)	-
		ASTM C485 RECTIFIED ± 0,40% (MAX ± 0,05 IN-SIZE ≤ 60 cm) (MAX ± 0,07 IN-SIZE > 60 cm)	± 0,25%
	ASSORBIMENTO D'ACQUA (VALORE MEDIO IN %) Water absorption (Average value expressed in %) - Absorption d'eau (Valeur moyenne en %) Wasseraufnahme (Durchschnittswert in %) - Absorción de agua (Valor medio en %) Поглощение воды	UNI EN ISO 10545/3 ≤ 0,5 %	CONFORME
		ASTM C373	COMPLIANT
	RESISTENZA ALLA FLESSIONE Modulus of rupture - Resistance a la flexion - Biegefestigkeit Resistencia a la flexion - Прочность на изгиб	UNI EN ISO 10545/4	≥ 50 N/mm²
		FORZA DI ROTTURA Breaking strength - Résistance à la rupture - Bruchlast - Resistencia a la rotura - Разрывное усилие	
	RESISTENZA AL GELO Frost resistance - Résistance au gel - Frostbeständigkeit Resistencia a las heladas - Морозостойкость	UNI EN ISO 10545/4	≥ 2000 N
		ASTM C648	250 Lbs
	RESISTENZA CHIMICA AD ALTE E BASSE CONCENTRAZIONI DI ACIDI E BASI Chemical resistance to high and low acid and basic concentrations Résistance chimique aux hautes et basses concentrations d'acides et de bases Chemikalienfestigkeit bei hohen und niedrigen Konzentrationen von Säuren und Basen Resistencia química con concentraciones altas y bajas de ácidos y bases Химическая стойкость к высоким и низким концентрациям кислот и щелочей	UNI EN ISO 10545/13	GA - GLA - GHA
		ASTM C-650	UNAFFECTED
	RESISTENZA ALLE MACCHIE Stain resistance - Résistance aux taches - Fleckenbeständigkeit Resistencia a las manchas - Стойкость к образованию пятен	UNI EN ISO 10545/14	5
		CTI 81-7D	NO EVIDENT VARIATION
	COEFFICIENTE DI ATTRITO Slip resistance - Coefficient de glissement - Rutschfestigkeit Barfußbereich Coeficiente de atrito medio - Коэффициент трения	DIN 51130	R10
		DIN 51097	B (A+B)
		ANSI A 137.1- 2012 DCOF (SECTION 9.6)	WET ≥ 0,42
		B.C.R.A.	≥ 0,40

Per maggiori chiarimenti sui dati tecnici e sulla garanzia consultare il catalogo generale in vigore. - For further information on technical specifications, please consult our up-dated general catalogue. - Pour toutes informations supplémentaires sur les données techniques et sur les garanties, veuillez consulter le catalogue general en vigueur. - Für weitere Informationen über technische Daten und Garantie beziehen sie sich bitte auf den aktuellen Gesamtkatalog. - Para ultiores informaciones sobre los datos tecnicos y la garantia, vease el catalogo general en vigor. - Более подробную информацию о технических данных и гарантии смотрите в действующем сводном катал.



Formato Size Format Format Tamaño Формат cm	Spessore Thickness Epaisseur Stärke Espesor Толщина mm	Pz. x Mq. Pieces x Sqm Pcs / M² Stk. x Qm Pzs x Mc. Шт x Кв.М.	Pz. x Scat. Pieces x Box Pcs / Bte Stk. x Krt. Pzs x Caja Шт x Кор.	Mq. x Scat. Sqm x Box M² / Bte Qm x Krt. Mc. x Caja Кв.М. x Кор.	Peso x Scat. Weight x Box Poids / Bte Gewicht x Krt. Peso x Caja Вес x Кор. Kg	Scat. x Pal. Boxes x Pal. Bte / Pal. Krt. x Pal. Cajas x Pal. Кор. x Подд.	Mq. x Pal. Sqm x Pal. M² / Pal. Qm x Pal. Mc. x Pal. Кв.М x Подд.	Peso x Pal. Weight x Pal. Poids / Pal. Gewicht x Pal. Peso x Pal. Вес x Подд. Kg
60x60 Naturale	9,5	2,78	3	1,080	25,53	40	43,20	1021
30x60 Naturale - Dec. Rail	9,5	5,56	6	1,080	24,16	48	51,84	1160
15x60 Dec. Rail	9,5	11,11	12	1,080	25,45	50	54,00	1172
30x30 Mosaico 5x5	9,5	11,11	5	0,450	10,80	60	27,00	648
30x30 Mosaico Domino	9,5	11,11	5	0,450	12,90	60	27,00	774
28,5x29,3 Mosaico Arrows	9,5	11,98	5	0,417	12,65	-	-	-



ACIF IS A BRAND OF EMILCERAMICA S.r.l. a socio unico	SEDE COMMERCIALE/AMMINISTRATIVA
info@emilceramicagroup.it	Via Ghiarola Nuova, 29 - 41042 Fiorano Modenese (Mo) - Italy T 0536 835111 F (Italy) +39 0536 835958 - (Export) +39 0536 835490